

# NYC'S MOST DANGEROUS INTERSECTIONS:

## A Comprehensive Guide to Pedestrian Safety and Prevention



### THE BIGGER PICTURE

#### UNDERSTANDING NYC'S TRAFFIC SAFETY CRISIS

#### WHY THIS MATTERS:

NYC has long been a global hub, bustling with millions of pedestrians, cyclists, and vehicles daily. However, this vibrancy comes with a downside—accident-prone intersections that endanger lives.



#### SOBERING STATISTICS:

- **Fatalities:** NYC averages over **200** pedestrian fatalities yearly, accounting for **52%** of all traffic-related deaths.
- **Injuries:** **10,000+** pedestrians and cyclists suffer injuries annually from collisions.

#### BOROUGH BREAKDOWN:

- **Manhattan:** The most dangerous borough for pedestrian accidents due to congestion and tourism density.
- **Brooklyn:** Frequent crashes at high-speed corridors like Atlantic Avenue.
- **Bronx:** Increasing risk in residential zones due to poor lighting and infrastructure issues.
- **Queens:** Accidents concentrated near transit hubs.
- **Staten Island:** Lowest incidents but vulnerable intersections near expressways.



### NYC'S MOST DANGEROUS INTERSECTIONS

#### TOP 10 INTERSECTIONS:

Each intersection is ranked based on annual accident data, pedestrian involvement, and common causes.

#### 42ND ST. & 8TH AVE. (MANHATTAN):

Annual Accidents: **125** Pedestrian Involvement: **60%**

**Causes:** Jaywalking, rush-hour congestion, tourist foot traffic

#### ATLANTIC AVE. & FLATBUSH AVE. (BROOKLYN):

Annual Accidents: **105** Pedestrian Involvement: **54%**

**Causes:** Speeding, distracted driving, high vehicle volume

#### 149TH ST. & GRAND CONCOURSE (BRONX):

Annual Accidents: **98** Pedestrian Involvement: **62%**

**Causes:** Poor visibility, jaywalking, lack of proper crosswalks

#### 34TH ST. & 7TH AVE. (MANHATTAN):

Annual Accidents: **93** Pedestrian Involvement: **58%**

**Causes:** Rush-hour crowding near transit hubs

#### QUEENS BLVD. & UNION TURNPIKE (QUEENS):

Annual Accidents: **88** Pedestrian Involvement: **55%**

**Causes:** High vehicle speeds, inadequate crossing signals

#### CANAL ST. & BOWERY (MANHATTAN):

Annual Accidents: **85** Pedestrian Involvement: **52%**

**Causes:** Heavy tourist traffic, confusing lane changes

#### CHURCH AVE. & NOSTRAND AVE. (BROOKLYN):

Annual Accidents: **82** Pedestrian Involvement: **50%**

**Causes:** Jaywalking, speeding vehicles in residential zones

#### JAMAICA AVE. & PARSONS BLVD. (QUEENS):

Annual Accidents: **78** Pedestrian Involvement: **47%**

**Causes:** Busy transit hub, inadequate pedestrian crossings

#### FORDHAM RD. & WEBSTER AVE. (BRONX):

Annual Accidents: **74** Pedestrian Involvement: **45%**

**Causes:** Poor lighting, heavy foot traffic

#### RICHMOND AVE. & VICTORY BLVD. (STATEN ISLAND):

Annual Accidents: **72** Pedestrian Involvement: **40%**

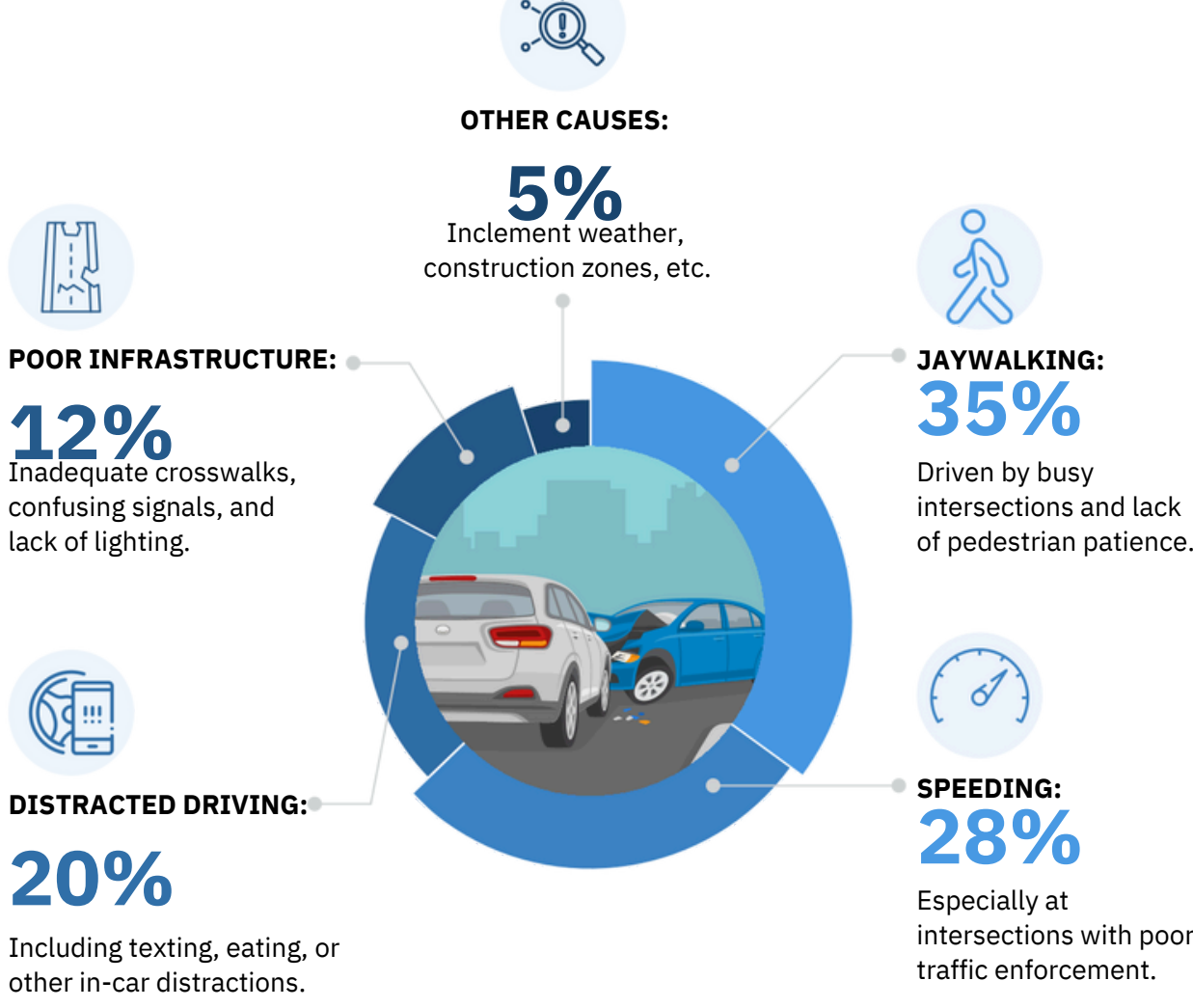
**Causes:** Limited crosswalk visibility, driver speeding



### WHAT'S CAUSING THESE ACCIDENTS?

#### BREAKING DOWN THE ROOT CAUSES

Common Causes by Percentage:



### WHEN ARE PEDESTRIANS AT THE GREATEST RISK?

#### TIMING IS EVERYTHING

High-Risk Times of Day:



### BOROUGH-SPECIFIC INSIGHTS

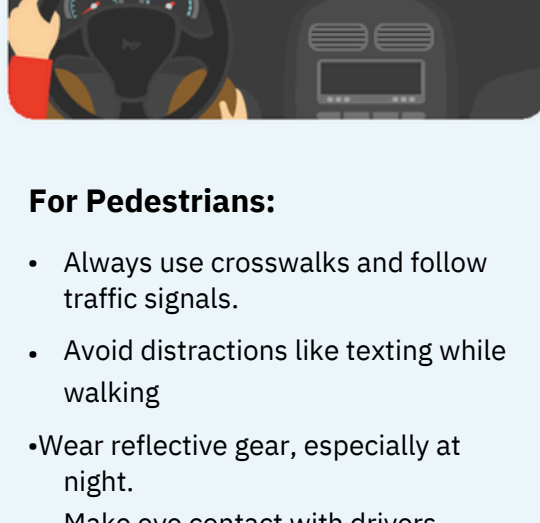
#### HOW EACH BOROUGH CONTRIBUTES TO THE NUMBERS



- **Manhattan:** Times Square, Herald Square, and Financial District top the danger list.
- **Brooklyn:** High-risk zones include Atlantic Avenue and Williamsburg Bridge.
- **Queens:** Key hotspots are Queens Blvd. and Jamaica Center.
- **Bronx:** Grand Concourse and Fordham Road are most dangerous.
- **Staten Island:** Hylan Blvd. and Staten Island Expressway have fewer accidents but higher severity.

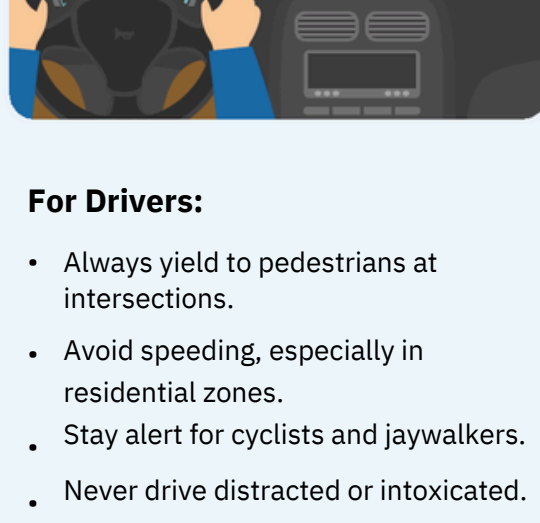
### PREVENTING FUTURE ACCIDENTS

#### PRACTICAL STEPS FOR PEDESTRIAN AND DRIVER SAFETY



#### For Pedestrians:

- Always use crosswalks and follow traffic signals.
- Avoid distractions like texting while walking.
- Wear reflective gear, especially at night.
- Make eye contact with drivers before crossing.



#### For Drivers:

- Always yield to pedestrians at intersections.
- Avoid speeding, especially in residential zones.
- Stay alert for cyclists and jaywalkers.
- Never drive distracted or intoxicated.

### LEGAL ADVOCACY WITH DANDALAW.COM

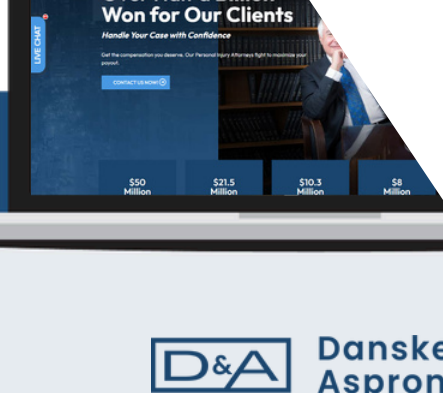
#### INJURED IN A PEDESTRIAN ACCIDENT? WE CAN HELP!

#### Dandalaw.com Specializes In:

- Pedestrian accident cases.
- Navigating municipal liability and insurance claims.
- Ensuring maximum compensation for injury victims.

#### Contact Information:

Visit: [www.dandalaw.com](http://www.dandalaw.com) | Call: (516) 206-6723.



#### Sources

- NYC Department of Transportation Traffic Injuries Data
- NYC Open Data Motor Vehicle Collisions Dataset
- Vision Zero NYC Action Plan
- TeletracNavman.com Case Study: Most Dangerous Roads